

2022 HOLIDAY SCHEDULE

We will be closed on
the following days:

Good Friday
April 15, 2022

Memorial Day
May 30, 2022

Independence Day
July 4, 2022

Labor Day
September 5, 2022

Thanksgiving
November 24, 2022
November 25, 2022

Christmas Day
Obs. December 26, 2022

New Year's Day
Obs. January 2, 2023

Office Locations:

- Kernersville
- King
- Tanglewood
- Thomasville
- Winston-Salem

Contact our
Appointment
Coordinator:

Stacy (336) 397-5255

ApptCoordinator@digestivehealth.ws



Digestive Issues in AAPI Community

Gastrointestinal diseases can have strong associations with certain ethnicities. Diet, genetics, and sanitation standards play a large role in the development and prevalences of many of these GI diseases.



Asian American Population

The Asian American population face different conditions based on environmental exposures, diet, and genetics. These diseases include:

- **Gastric Cancer:** Highest incidences in the East Asian population. (China, Japan, Korea)
- **Hepatitis B:**

Finding us on EPIC

Do you send us referrals through EPIC? If so, we want to make sure you are not having issues finding our practice locations.

We were recently notified that when processing the referrals, for some, not all of our locations populate. We want to make sure that your patients receive the appropriate referral location information. That is why we want to provide the correct EPIC codes for each location:

One of the most common liver viruses that affect Asians, many pass along the virus at childbirth.



Pacific Islander Population

This region, sometimes referred to as Oceania, is diverse in its cultures, ethnicities, economic development, and living standards.

- **Colorectal Cancer:** Access to medical care and the availability of screening tests, such as colonoscopies, are limited resources in the Pacific region areas, contributing to the rise in incidences.
- **Gastroesophageal Reflux**

Disease (GERD):

Obesity and diet appear to be the two biggest risk factors.

- **Inflammatory Bowel Disease (IBD):** Costs of management and medications may become a burden, leading to worse outcomes.
- **Nonalcoholic Fatty Liver Disease:**

Obesity and diabetes plagued the Pacific region and frequently associated with these medical conditions

These conditions can be prevented, treated, or managed with specialized care. Some of the conditions may be asymptomatic until severe disease has developed. Learn more on how these diseases affect the AAPI population at the link below:

[Digestive Issues in Asian and Pacific Islander Population](#)

Kernersville

DIGESTIVE HLTH KVLOFC
[4300301]

King

DIGESTIVE HLTH KNGOFC
[4300901]

Tanglewood

DIGESTIVE HLTH ADVOFC
[4300701]

Thomasville

DIGESTIVE HLTH TVLOFC
[4300501]

Winston-Salem

DIGESTIVE HLTH WSOFC
[4300101]

If you are having issues finding our codes, please let us know at the information below.

- Stacy Wall
Appointment Coordinator
(336) 397- 5255
ApptCoordinator@digestivehealth.ws or
- DeEtte Hill
Practice Administrator
(336) 768-6211 x1182
deetteh@digestivehealth.ws

Digestive Health Specialists, P.A.

Caring for You, Close to Home.

2025 Frontis Plaza Blvd.
Suite 200 & 210
Winston-Salem, NC 27103

280 Broad St.
Suite F & G
Kernersville, NC 27284

434 Kirby Rd.
King, NC 27021

137 Mt. Calvary Rd.
Suite A
Thomasville, NC 27360

112 Kinderton Blvd.
Suite 100
Advance, NC 27006

Main Phone Line: 336-768-6211

Email: ApptCoordinator@digestivehealth.ws

Access the [Referring Physician's Satisfaction Survey here.](#)

 Colon Cancer Prevention Center

All of our physicians have privileges at: **NH Forsyth Medical Center • NH Kernersville Medical Center • NH Thomasville Medical Center**

Full-service clinics and ASC licensed and AAAHC approved endoscopy center.

GI services in one place!

On-site Procedures:

- Colonoscopy
- Endoscopy
- Esophageal Dilation
- Flexible Sigmoidoscopy
- Hemorrhoid Removal
- Wireless Capsule Endoscopy

Hospital Procedures

- ERCP
- EUS
- Liver Biopsy
- PEG Feeding Tubes

Our clinics treat the following conditions:

- Acid Reflux
- Anemia
- Barrett's Esophagus
- Celiac Disease
- Colorectal Cancer
- Constipation
- Crohn's Disease
- Diarrhea
- GERD
- GI Bleeding
- Hemorrhoids
- Hepatitis
- Irritable Bowel Syndrome
- Liver Cirrhosis
- Ulcerative Colitis

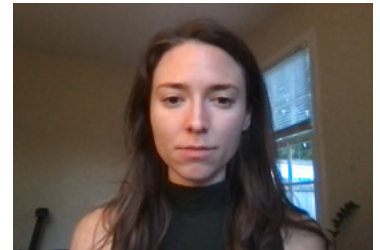
And More

Women's Health Concerns

Our women providers understand the health concerns that our female patients face, both because of their profession and their gender. It is why for National Women's Health Week (May 8-14), two of our providers created videos that we hope will

help these patients and shed some light on conditions that are common in women. Watch the videos by Courtney Milleson, PA-C and Libby Greenwood, PA-C, at the link below:

[Our Videos](#)



All Digestive Health Specialists locations will be closed on Monday, May 30th in observance of Memorial Day.

Career Opportunities at Digestive Health Specialists

If you know of someone who you feel would be a good fit or someone who may have lost their job during the pandemic, please share with them the ["Careers"](#) section of our website. We have both clinical and administrative positions.



Facebook



Instagram



Twitter



LinkedIn



YouTube